
Comfort-Aire®

 **Century**®

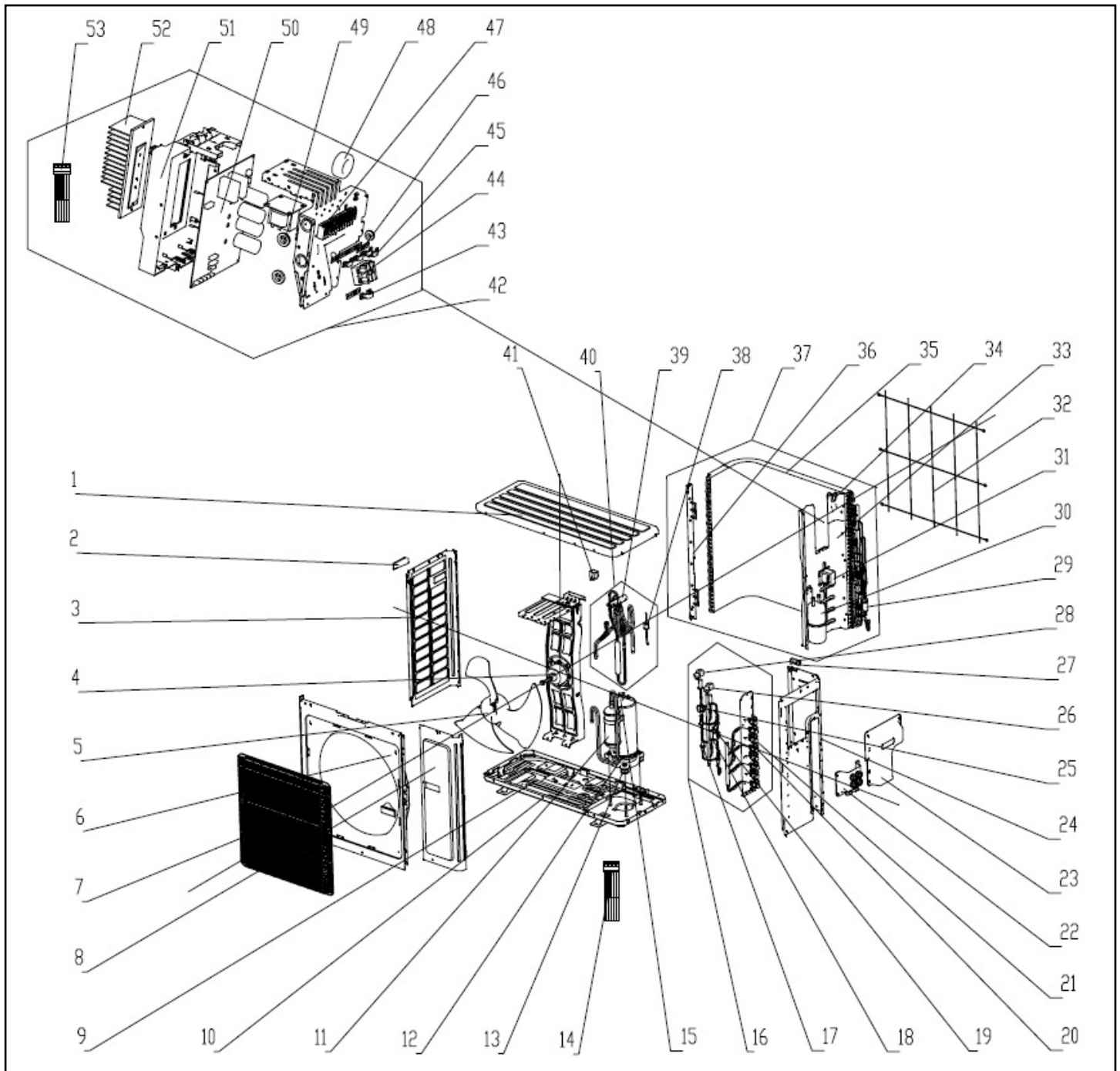
MARS®
Delivering Confidence

REPLACEMENT PARTS LIST

InverterFlex Series®
Outdoor Ductless Mini-Split

A-VFH30QB-1

EXPLODED VIEW



REPLACEMENT PARTS

Location	Part Name	Quantity	Part No.
1	Top Cover Sub-Assembly	1	01264100013
2	Left Handle	1	26235401
3	Left Side Plate	1	01305043P
4	Fan Motor	1	15702802
5	Axial Flow Fan	1	10335014
6	Front Panel Assembly	1	0153501405
7	Front Grill	1	01473050
8	Front Side Plate	1	01305086P
9	Electrical Heater	1	765100047
10	Chassis Assembly	1	01194100059
11	Compressor	1	00205200003
12	Electric Heater (Compressor)	1	7651873215
13	Compressor Gasket	3	76713066
14	Sensor Sub-Assembly	1	39004100005G
15	Compressor Overload Protector (External)	1	00180030
16	Valve Support Assembly	1	030163000003
17	Strainer A	2	07210022
18	Electronic Expansion Valve	2	07334447
19	Electric Expand Valve Fitting (Red Plug/D-Zone)	1	4304413222
20	Cut Off Valve	1	071302391
21	Cut Off Valve	1	07130239
22	Wiring Cover Sub-Assembly	1	01264100034
23	Handle Assembly	1	02204100008
24	Right Side Plate	1	0131410000901P
25	Electric Expand Valve Fitting	1	4304413234
26	Electric Expand Valve Fitting	1	4304413235
27	Wiring Clamp	1	26115004
28	Electric Expand Valve Fitting	1	4304413237
29	Bidirection Strainer	1	07220016
30	Gas-Liquid Separator	1	07223048
31	Reactor	2	43130186
32	Rear Grill	1	01574100003
33	Clapboard	1	01244100003
34	Cable Cross Loop	2	76512008
35	Condenser Assembly	1	01124100007_L61437
36	Condenser Support Plate	1	01175092
37	Condenser Assembly	1	01124100118_L61437
38	High Pressure Protection Switch	1	46020015108
39	4-Way Valve	1	4300008201
40	4-Way Valve Assembly	1	04045200071
41	Magnet Coil	1	4300040072
42	Electric Box Assembly	1	01395200378_L61437
43	Wire Clamp	1	71010005
44	Terminal Board	1	42018094
45	Wire Clamp	4	71010003
46	Insulation Gasket	1	70410006
47	Terminal Board	4	420111041
48	Magnetic Ring	2	49010109
49	Cable Cross Loop	2	76510021
50	Main Board	1	30228000026
51	Electric Box	1	26904100013
52	Radiator	1	49018000077
53	Sensor Sub-Assembly	1	39008000017G
Not Shown	Valve Cover	1	200081000006
Not Shown	Carton	1	51029961465

Due to ongoing product improvements, specifications and dimensions are subject to change and correction without notice or incurring obligations. Determining the application and suitability for use of any product is the responsibility of the installer. Additionally, the installer is responsible for verifying dimensional data on the actual product prior to beginning any installation preparations.

Incentive and rebate programs have precise requirements as to product performance and certification. All products meet applicable regulations in effect on date of manufacture; however, certifications are not necessarily granted for the life of a product. Therefore, it is the responsibility of the applicant to determine whether a specific model qualifies for these incentive/rebate programs.



1900 Wellworth Ave., Jackson, MI 49203 • Ph. 517-787-2100 • www.marsdelivers.com

