
Comfort-Cire®

Century®

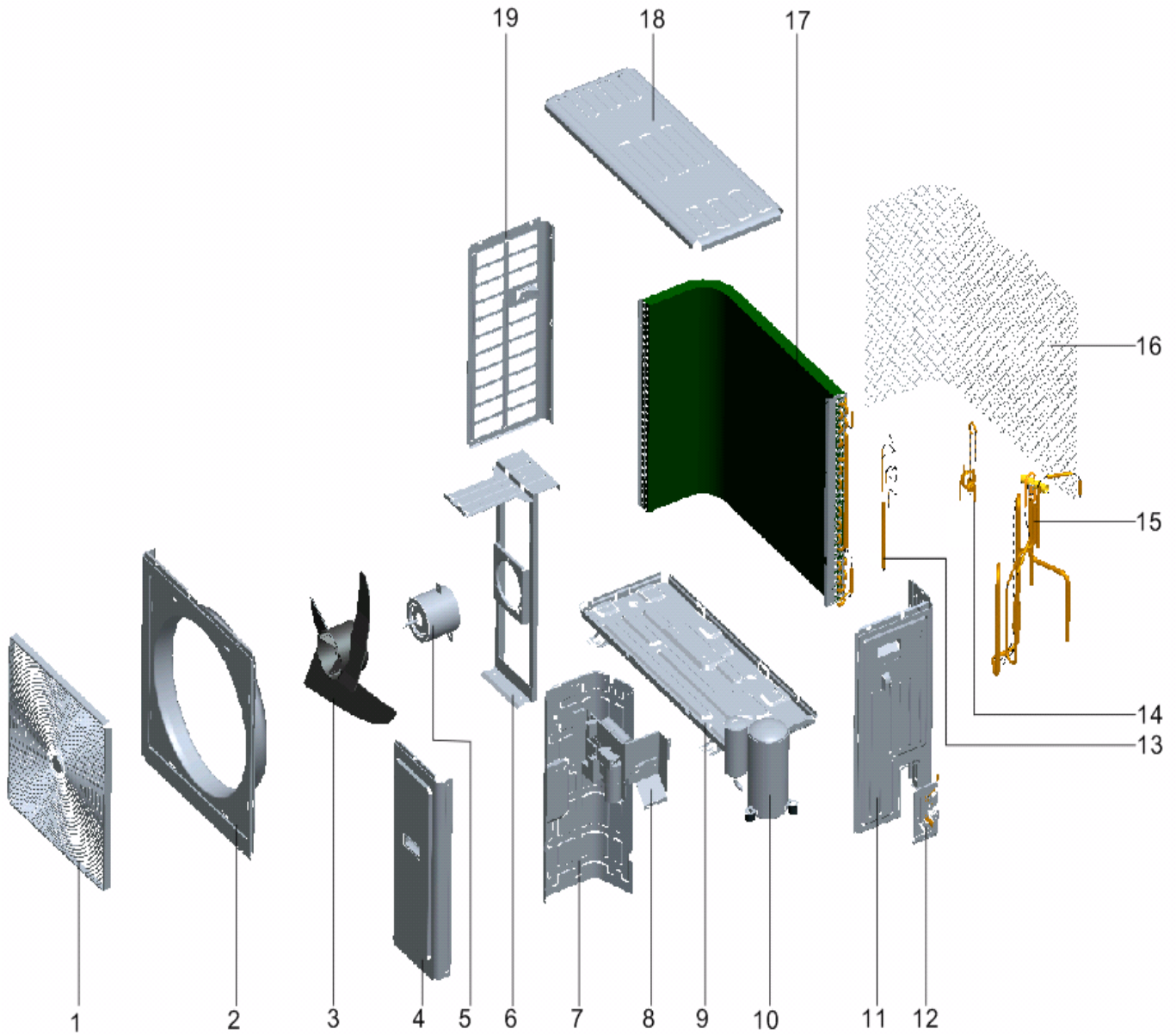
MARS®
Delivering Confidence

PARTS LIST

**Horizontal/Side Discharge
Condensing Units**

CMA24SD-1

EXPLODED VIEW



REPLACEMENT PARTS

Location	Part Name	Part No.
1	Net cover	802928290002
2	Panel	801219900681
3	Propeller fan	801100300022
4	Maintenance panel parts	801228290041
5	Outdoor motor(YDK-150-6CH)	802400400592
6	Support for motor	801219900680
7	Median septum	801219900686
8	The electric control parts	803328290020
9	Chassis	801232890019
10	Compressor assy	801428290002
11	Right separating board parts	801219900682
12	Base board for valve assy	801228290036
12.1	Base board for valve	801219900676
12.2	Stop valve	801619900126
12.3	Stop valve	801619900127
13	Shunt capillary module	801628290082
14	Condenser collector assembly	801628290081
15	Piping parts	801628290086
16	Back mesh	801132990002
17	Condenser parts	801528290017
18	Top cover board parts	801228290042
19	Left separating board parts	801228290037
Not Shown	Installation board welding assembly for E-parts	801219900679
Not Shown	AC contactor	802300100251
Not Shown	Pressure switch	802300900041
Not Shown	Compressor capacitor	802401000034
Not Shown	Fan motor capacitor	802401100043

Due to ongoing product improvements, specifications and dimensions are subject to change and correction without notice or incurring obligations. Determining the application and suitability for use of any product is the responsibility of the installer. Additionally, the installer is responsible for verifying dimensional data on the actual product prior to beginning any installation preparations.

Incentive and rebate programs have precise requirements as to product performance and certification. All products meet applicable regulations in effect on date of manufacture; however, certifications are not necessarily granted for the life of a product. Therefore, it is the responsibility of the applicant to determine whether a specific model qualifies for these incentive/rebate programs.

Comfort-Aire®

1900 Wellworth Ave., Jackson, MI 49203 • Ph. 517-787-2100 • www.marsdelivers.com

